

HD PRO IP DOME



High Definition IP Dome Cameras with High Definition Stream Management (HDSM)

Key Features

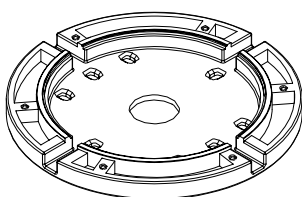
Benefits

Compact Ruggedized Dome Form Factor	<ul style="list-style-type: none"> • Vandal Resistant , water proof, and dustproof • Versatile 3-axis adjustment for simple mounting in any configuration • Mounting accessories for in-ceiling, electrical box, and outdoor environments
Optional Integrated IR Illumination	<ul style="list-style-type: none"> • Clear high resolution surveillance in challenging low-light applications
Multi-Megapixel	<ul style="list-style-type: none"> • Capture high quality detailed images • Reduce total number of cameras • Live and post-incident digital PTZ
High Image Rates	<ul style="list-style-type: none"> • Real-time HD viewing of live and playback footage
Auto Iris	<ul style="list-style-type: none"> • Automatically adjusts iris and exposure to capture highest quality images
Automatic IR Cut Filter	<ul style="list-style-type: none"> • Superior low-light performance and sensitivity to IR
JPEG2000 Progressive Lossless Compression	<ul style="list-style-type: none"> • Highest possible quality recording with no loss of data
Alarm Input and Outputs	<ul style="list-style-type: none"> • Synchronize recording with external alarms and integrate camera motion detection into your current alarm system
Power-over-Ethernet (PoE)	<ul style="list-style-type: none"> • No external power required
Plug-and-Play	<ul style="list-style-type: none"> • Auto-detection and auto-configuration of cameras for easy installation

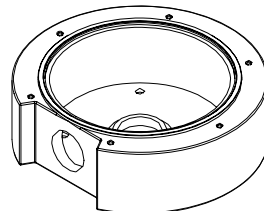
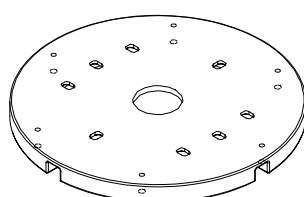
Resolution	Pixel Layout	Sensor Format	Lens Mount	Maximum Images Per Second	Camera Type	Sensitivity (lux)	Model	Recommended Application
5.0 MP	2592 × 1944	1/2.5"	C/CS	12 ips	Color Day/ Night	0.3 in Color 0.03 in Monochrome	F5.0MP-HD-DOME-DN	Highest resolution of the HD IP Camera series for monitoring large areas in maximum detail with fluid motion *
3.0 MP	2048 × 1536	1/2"	C/CS	12 ips	Color Day/ Night	0.2 in Color 0.02 in Monochrome	F3.0MP-HD-DOME-DN	High resolution for monitoring large areas in higher than HD detail with fluid motion *
2.0 MP (1080p)	1920 × 1080	1/2.5"	C/CS	18 ips	Color Day/ Night	0.2 in Color 0.02 in Monochrome	F2.0MP-HD-DOME-DN	HDTV 16:9 format and high refresh rate for capturing near real-time 1080P video
1.0 MP (720p)	1280 × 720	1/3"	C/CS	39 ips	Color Day/ Night	0.2 in Color 0.02 in Monochrome	F1.0MP-HD-DOME-DN	HDTV 16:9 format and the highest refresh rate available for capturing real-time HD video *

HD IP Dome Camera Options	DESCRIPTIONS
-H	Factory installed heater unit
-IR	Factory installed IR LED ring for short range illumination up to 50 feet (15m)

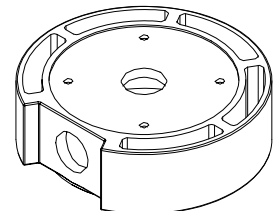
HD IP Camera Dome Accessories	DESCRIPTIONS
FDOME-INDE-PLT	Indoor electrical box mounting plate, allows surface mounting with side cable access and mounting to an electrical box
FDOME-OD-BASE	Outdoor mounting base, creates an IP66 sealed enclosure and allows conduit connection and pipe mounting
FDOME-OD-PEND	Outdoor pendant mount, creates an IP66 enclosure for connection to industry standard pendant mounts
FDOME-IND-CEL	In-ceiling mount allows the camera to be ceiling mounted with only the external dome cover showing
FDOME-SMOKE	Replacement smoked transparent cover



FDOME-INDE-PLT



FDOME-OD-BASE



*HD IP Dome Cameras have DC auto-iris control and can be powered by PoE, AC or DC. Product specifications subject to change without notice.